

HISTORICAL FACT SHEET Telephone Industry Related Companies



COMPANY Atwater Kent Manufacturing Works

DATE ORGANIZED 1895

WHERE ORGANIZED Philadelphia, PA

FOUNDER(S) Arthur Atwater Kent

NATURE OF BUSINESS Manufacturer

Subsequent names or significant changes resulting from acquisitions, consolidation, sales or bankruptcies:

DATE

Formed as Kent Electric Mfg Co of Worcester, MA

1895

Moved to Philadelphia and renamed Atwater Kent Mfg Works

1902

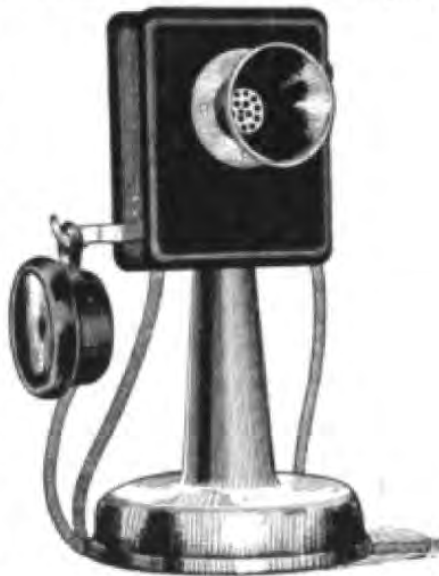
REMARKS Mr. Kent formed the company making electric motors and fans. When he moved the business to Philadelphia in 1902, he began making batteries, radios and other electric items including the Monoplex Telephone.

Source: History of Atwater Kent Radios, 1921; Western Electrician, 1902; Electrical Review, 1903



New Desk Telephone Set.

The Atwater-Kent Manufacturing Works, Philadelphia, has brought out a desk telephone set which differs in several respects from the usual form of this type of instrument. It consists in the combination with a nicked stand of handsomely finished oak box scarcely larger than an ordinary transmitter case. A flexible cord connects this with a terminal block on the wall. On this block is also placed the bell. The sets are made to be used with both the two-end and intercommunicating systems. The self-contained transmitter of the same make, which is always in adjustment, is mounted inside of the box. The receiver is made in one piece and has no parts to become loose. The hook contacts are knife edge, which makes it impossible for acid or dirt to prevent perfect contact. The instrument is finished in a neat and desirable manner.



DESK TELEPHONE.

Intercommunicating Telephone Systems.

The many demands for an intercommunicating system that would give good satisfaction led the Atwater Kent Manufacturing Works, of Philadelphia, Pa., soon after the Monoplex instruments, made by this company, went on the market, to give the matter its attention. A careful study of the requirements of systems for various uses was made, and the systems developed by installing them in a large number of places where they would be given a severe test for reliability and convenience. The Monoplex instru-

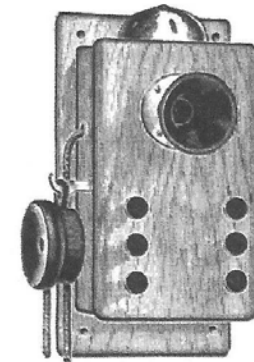


FIG. 1.—MONOPLEX TELEPHONE.

ments, used on these systems, are simple in construction, and the systems are designed so that they are easy to install.

Fig. 1 is an illustration of the Monoplex instrument, and Figs. 2, 3 and 4 are diagrams of circuits designed for use with these instruments.

Fig. 2 shows an all-around intercommunicating and selective ringing system. The instruments have no switches and are automatic in operation. A feature with this switchless type of instrument is in the calling operation. All that is nec-



Mr. Atwater Kent