

HISTORICAL FACT SHEET Telephone Industry Related Companies



COMPANY Anderson Electric & Manufacturing Co

DATE ORGANIZED 1909

WHERE ORGANIZED Wichita, KS

FOUNDER(S) John Anderson, Clarence Anderson

NATURE OF BUSINESS Manufacturer

Subsequent names or significant changes resulting from acquisitions, consolidation, sales or bankruptcies:

DATE

_____	_____
_____	_____
_____	_____
_____	_____
_____	_____
_____	_____

REMARKS Based on the patent by Clarence, this short lived company was formed to produce party-line lock out telephones

_____	_____
_____	_____
_____	_____
_____	_____

Source: The Hutchinson (KS) News, 1909

The Anderson Lockout System Will Enable You to Make Your Party Line Service The Equivalent of Individual Line Service

1910

ADVANTAGES RESULTING FROM ITS USE

¶ All parties except the one called are locked off the line.

¶ "Code Rings" are dispensed with as only one ring is required for station or stations called by the operator.

¶ Best possible talking conditions are provided. "Rubbering" is done away with.

¶ Locked out parties may signal operators in emergency cases, but cannot listen in.

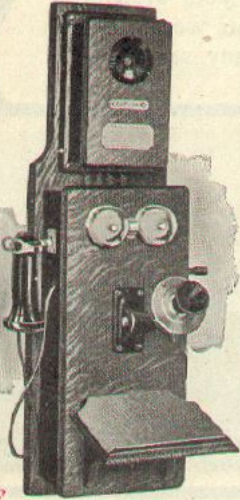
¶ Type A Attachment to any standard make of bridging telephone will accomplish these desired results.

Write Home Office for Full particulars

Anderson Electric & Manufacturing Co.

Home Office
Wichita, Kansas

Factory
322-328 N. May St., Chicago, Ill.



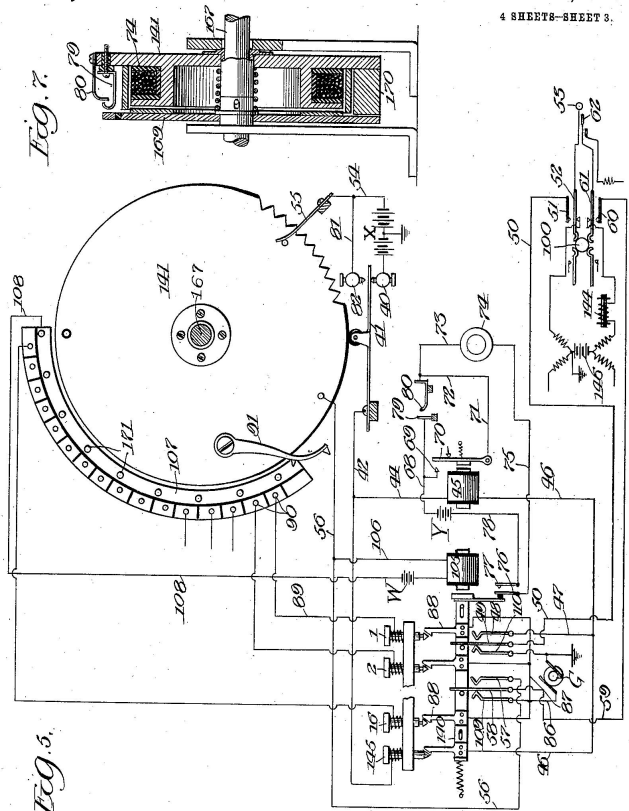
537

C. A. ANDERSON.
PARTY LINE TELEPHONE EXCHANGE.
APPLICATION FILED FEB. 28, 1910.

980,857.

Patented Jan. 3, 1911.

4 SHEETS-SHEET 3.



Witnesses
O. W. Hennich
Walter Redfield.

Inventor
Clarence A. Anderson
by Cooper L. Redfield
Att'y